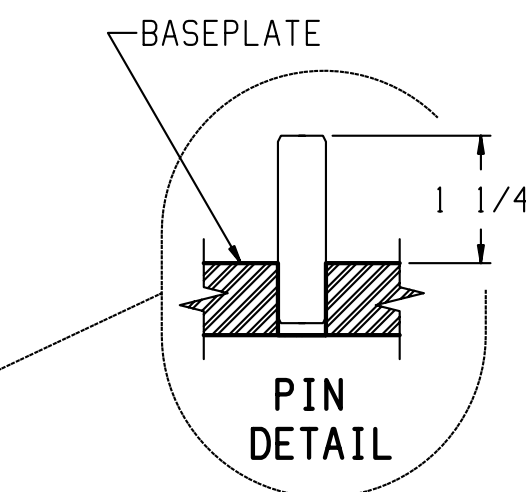



BY METTLER TOLEDO: DRILL TWO #29 HOLES IN
SUPPORT TUBE AND FASTEN DATA PLATE WITH 1/
ALUMINUM AB4-4 POP RIVETS.

THE INTERIOR SURFACE OF ALL LOAD CELL
RECEIVERS (BOTH TOP AND BOTTOM) MUST BE
LUBRICATED WITH 68004326 DURING CELL
INSTALLATION.



REV	CHANGE	BY	DATE	SCALE .25			
A	REMOVED DIELECTRIC COMPOUND	ADF	12/14/09	DATE 10/01/09			
B	CONCRETE PST WAS 4000	KRS	08/31/11	DRN ADF APPD ADF			
C	REMOVED DIELECTRIC NOTES, CORRECTED DETAIL C			TITLE GENERAL LAYOUT VTC22x 3-MODULE			
	CORRECTED DETAIL A	JSM	09/18/12				
D	CONCRETE/FIBER REINF.. N109 UPDATE	CTR	10/16/13	<p>THIS PRINT IS FURNISHED WITH THE UNDERSTANDING THAT THE ESSENCE THEREOF WILL NOT BE REPRODUCED IN WHOLE OR IN PART WITHOUT WRITTEN AUTHORIZATION OF METTLER-TOLEDO, LLC. ALL DESIGN ARE THE PROPERTY OF METTLER-TOLEDO, LLC, AND WILL BE PROTECTED BY PATENTS.</p> <p>61800001</p>			
E	REMOVED TABLES	ADF	10/13/16				
				FRACTIONAL .XX ±.02 DECIMAL .XXX ±.005 ANGULAR ±.5°	REV E		